



**Technical Service
Information Bulletin**

June 11, 2007

Title: **HOMELINK® DIFFICULT TO PROGRAM**

Models: **'07 LS 460/460L**

**ELECTRICAL
EL008-07**

Introduction Some vehicles may exhibit a condition where the HomeLink® Universal Transceiver is difficult to program. An updated HomeLink® Universal Transceiver has been made available. In addition, an updated programming procedure has been made available for newer “rolling code” garage door openers.

- Applicable Vehicles**
- **2007** model year **LS 460/460L** vehicles produced **BEFORE** the Production Change Effective VINs shown below.

**Production
Change
Information**

MODEL	PRODUCTION CHANGE EFFECTIVE VIN
LS 460	JTHBL46F#75032870
LS 460L	JTHGL46F#75013364

**Parts
Information**

PREVIOUS PART NUMBER	CURRENT PART NUMBER	PART NAME	QTY
89755-0W110	89755-0W111	Transmitter, Garage Door Opener	1

**Cautions
Before
Programming**

CAUTIONS BEFORE PROGRAMMING THE HOMELINK® UNIVERSAL TRANSCEIVER:

- Do NOT use the HomeLink® Universal Transceiver with any garage door opener that lacks the safety stop and reverse feature as required by federal safety standards. (This includes any garage door opener model manufactured before April 1, 1982.) A garage door opener, which cannot detect an object, signaling the door to stop and reverse, does not meet current federal safety standards.
- When programming the HomeLink® Universal Transceiver, you may be operating a garage door or other device. Make sure that people and objects are out of the way of the garage door or other device to prevent potential harm or damage.

**Warranty
Information**

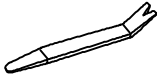
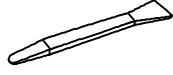
OP CODE	DESCRIPTION	TIME	OFFP	T1	T2
EL7012	R & R Interior Light Assembly	0.2	89755-0W110	72	71
Combo A	R & R HomeLink® Transceiver	0.1			

Applicable Warranty*:
 This repair is covered under the Lexus Comprehensive Warranty. This warranty is in effect for 48 months or 50,000 miles, whichever occurs first, from the vehicle's in-service date.

* Warranty application is limited to correction of a problem based upon a customer's specific complaint.



Required Tools & Equipment

SPECIAL SERVICE TOOLS (SSTs)		PART NUMBER	QTY	DRW**
Plastic Pry Tool Set*		00002-06000-01	1	21
COMPONENT(S) OF KIT/SET	NOTE:			
	<ul style="list-style-type: none"> All components from this kit/set are required. 			
	<ul style="list-style-type: none"> Plastic Panel Clip Removal Tool (P/N 00002-06001-01) Plastic Emblem Removal Tool (P/N 00002-06002-01) 	 		

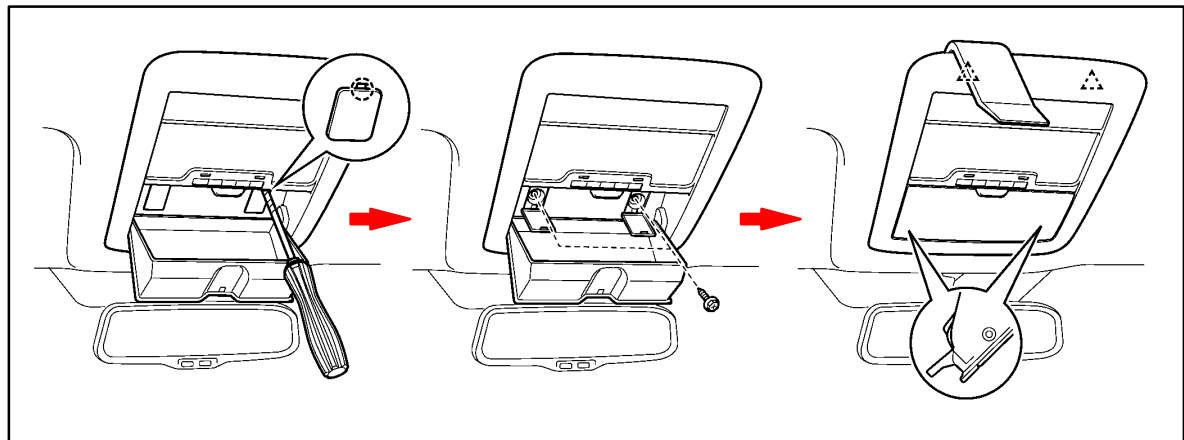
* Essential SSTs.

** Drawer number in SST Storage System.

NOTE:
Additional SSTs may be ordered by calling SPX/OTC at 1-800-933-8335.

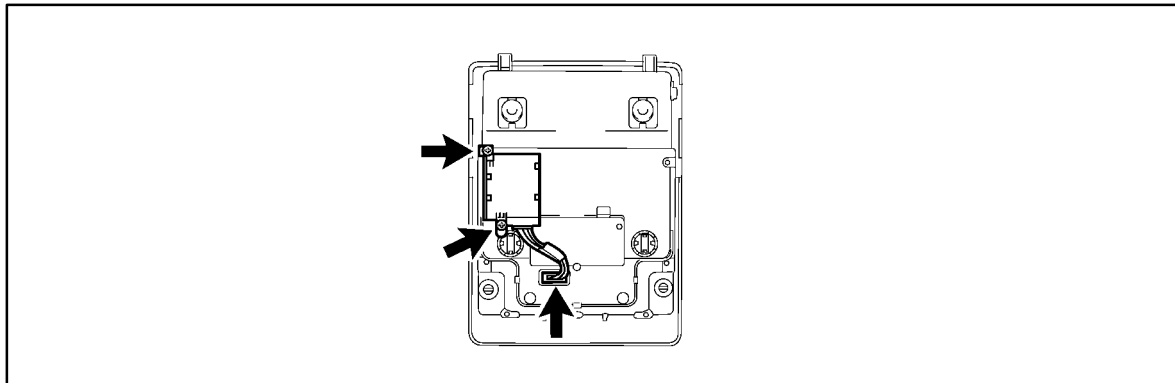
Repair Procedure

1. Remove the map light assembly.
 - A. Using the plastic pry tool, detach the 2 claws and open the 2 covers.
 - B. Remove the 2 screws.
 - C. Using the plastic pry tool, detach the 2 clips.
 - D. Disconnect the two connectors.
 - E. Remove the map light assembly.



Repair Procedure
(Continued)

2. Remove the garage door opener transmitter.
 - A. Disconnect the connector.
 - B. Remove the 2 screws and remove the garage door opener transmitter.



3. Install a NEW garage door opener transmitter.
4. Reassemble in reverse order of disassembly.

Programming Procedure

For rolling & non-rolling code:

1. Press and hold down one of the HomeLink® buttons and the button on the transmitter.
The HomeLink® indicator light blinks a slow flash immediately.
2. Continue pressing and holding the HomeLink® button and transmitter until the indicator light changes from a slow to a rapid flashing within a few seconds.
3. Release both buttons. Programming is completed.
4. Test the HomeLink® operation by pressing the newly programmed button. Check to see if the device operates the garage door correctly.



Programming Procedure complete.

Go to step 5.

IMPORTANT:
If the garage door does NOT operate, press and hold the trained HomeLink® button. If the indicator light flashes rapidly and then turns solid after 2 seconds, it may be the older “rolling code” type, go to step 5.

5. Locate the “training” button on the ceiling-mounted garage door opener motor.
The exact location and color of the button may vary by brand of garage door opener.
6. Press and release the “training” button on the ceiling-mounted garage door opener motor.

Programming Procedure
(Continued)

7. Press and release the vehicle's programmed HomeLink® button twice.
 - If the door opens, the programming process is complete.
 - If the door does NOT open, it may be necessary to press and release the button a third time.

The ceiling-mounted garage door opener motor should now recognize the HomeLink® and should activate the garage door.

Erasing Memory Procedure

1. Press and hold down the 2 outside buttons on the HomeLink® for 10 seconds until the indicator light flashes.
2. Release both buttons. Erasing is completed.

Programming Tips & General Information

- The compatible programming frequency range of the HomeLink® is between 288 – 322 MHz, 335 – 399 MHz, and 433 MHz.
- To ensure effective programming of the HomeLink®, install a NEW battery in the handheld transmitter of the device being programmed prior to programming.
- The effective HomeLink® transmission range is usually equal to or greater than the handheld transmitter.
- The battery side of the handheld transmitter MUST be pointed away from the HomeLink® during the programming process.
- Keep the HomeLink® LED (indicator light) in view while programming.
- When programming rolling code, the training button can usually be found on the back of the garage door motor near the antenna wire.

LED Light Definitions

CONDITION	DEFINITION
Constant Light (Solid)	HomeLink® is in the default mode and has not been cleared. OR HomeLink® is transmitting a signal from a fixed code device.
Slow Blink	HomeLink® is in program mode (ready to accept handheld transmitter).
Fast Blink	HomeLink® has just accepted the program from the handheld transmitter.
Fast Blink for 1 – 2 seconds THEN Constant Light (Solid)	HomeLink® is trained to operate rolling code devices.
No Light	No power to the HomeLink®. OR HomeLink® is malfunctioning.

NOTE:

Additional information and/or programming instructions for other devices can be obtained from HomeLink® at 1-800-355-3515 or on their web site at www.homelink.com.