



**Technical Service  
Information Bulletin**

August 10, 2007

Title:

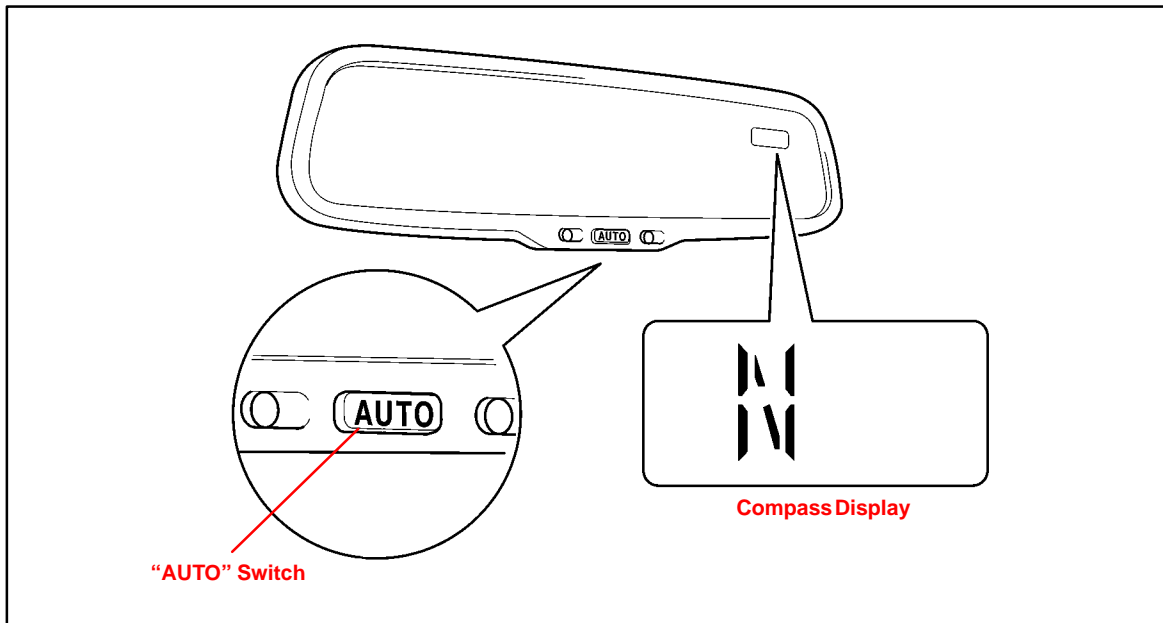
# INITIAL CALIBRATION OF COMPASS DURING PDS

Models:

'08 LS 460

PRE-DELIVERY SERVICE  
**PD039-07**

**Introduction** Some 2008 model year LS 460 vehicles are equipped with a compass in the rear view mirror. Use the following procedure to complete initial calibration of the compass during Pre-Delivery Service (PDS).



- Applicable Vehicles**
- 2008 model year **LS 460** vehicles **without the navigation system.**

**Warranty  
Information**

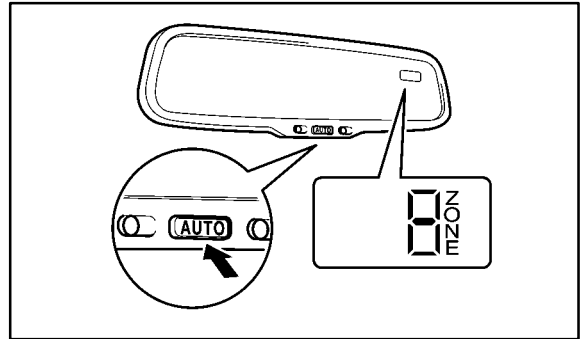
OP CODE	DESCRIPTION	TIME	OFF	T1	T2
N/A	Not Applicable to Warranty	-	-	-	-



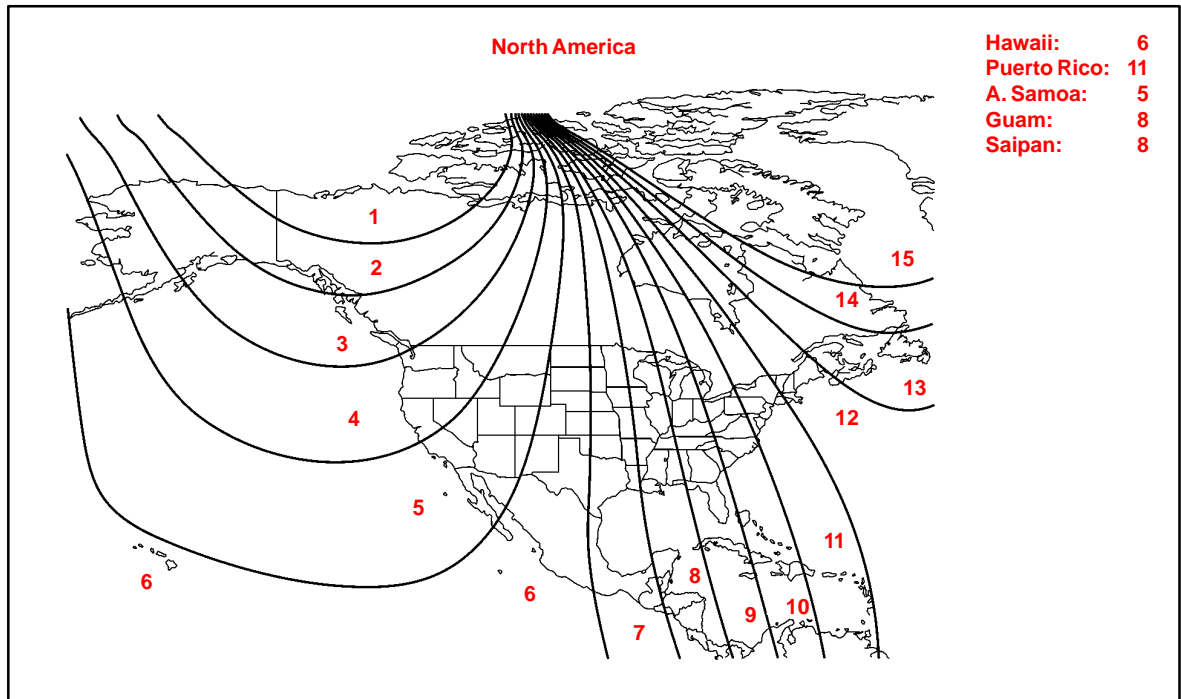
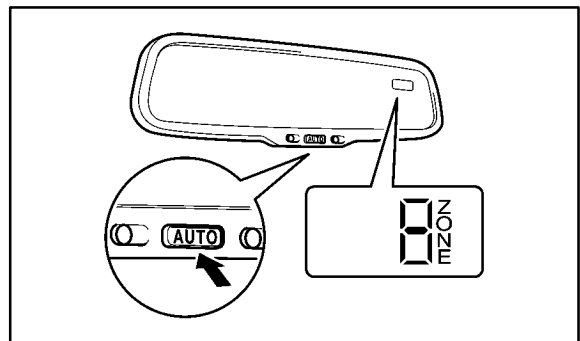
**Compass Calibration Procedure**

1. With foot OFF of the brake pedal, press the engine START/STOP button twice to switch to “IG-ON” mode.
2. Push and hold the “AUTO” switch on the mirror for at least 6 seconds until the zone number appears on the compass display.

**NOTE:**  
 Pushing the “AUTO” switch for 3 seconds turns the compass display ON or OFF.

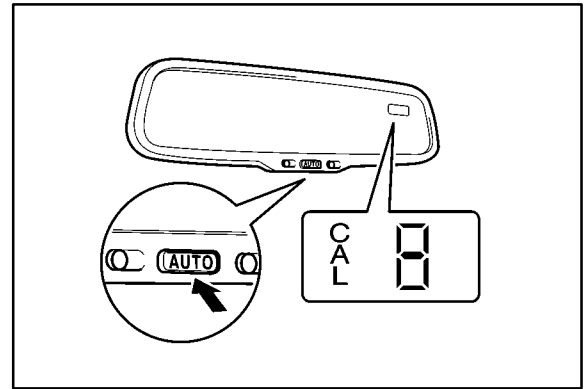


3. Once the zone appears, push the “AUTO” switch to select the number of the zone where the vehicle is located. See the map below for zone reference.



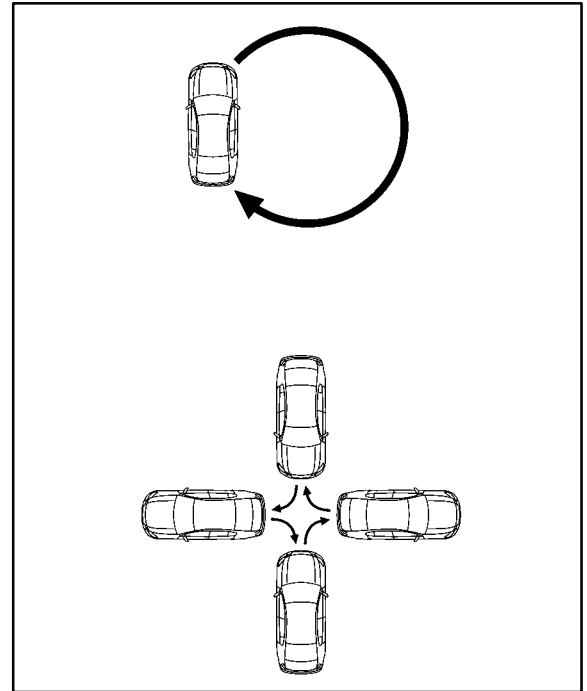
**Compass  
Calibration  
Procedure**  
(Continued)

4. Depress the brake pedal and press the engine START/STOP switch once to start the engine.
5. Push and hold the “AUTO” switch on the mirror for at least 9 seconds until “CAL” appears on the display.



6. Drive the vehicle slowly at 5 mph (8 km/h), or less, in a circle until the direction is displayed. If there is NOT enough space to drive in a circle, turn the car around as shown, doing two three-point turns in succession.

After driving in circles 1 to 3 times, “CAL” disappears and calibration is complete.



**NOTE:**

- Do NOT perform calibration of the compass in a place where the Earth’s magnetic field is subject to interference (underground parking, under a steel tower, between buildings, roof parking, near a railroad crossing, near a large vehicle, etc.)
- During calibration, do NOT operate electric systems (moon roof, power windows, etc.) as they may interfere with the calibration.