



**Technical Service
Information Bulletin**

September 22, 2006

Title:

INITIAL CALIBRATION OF COMPASS DURING PDS

Models:

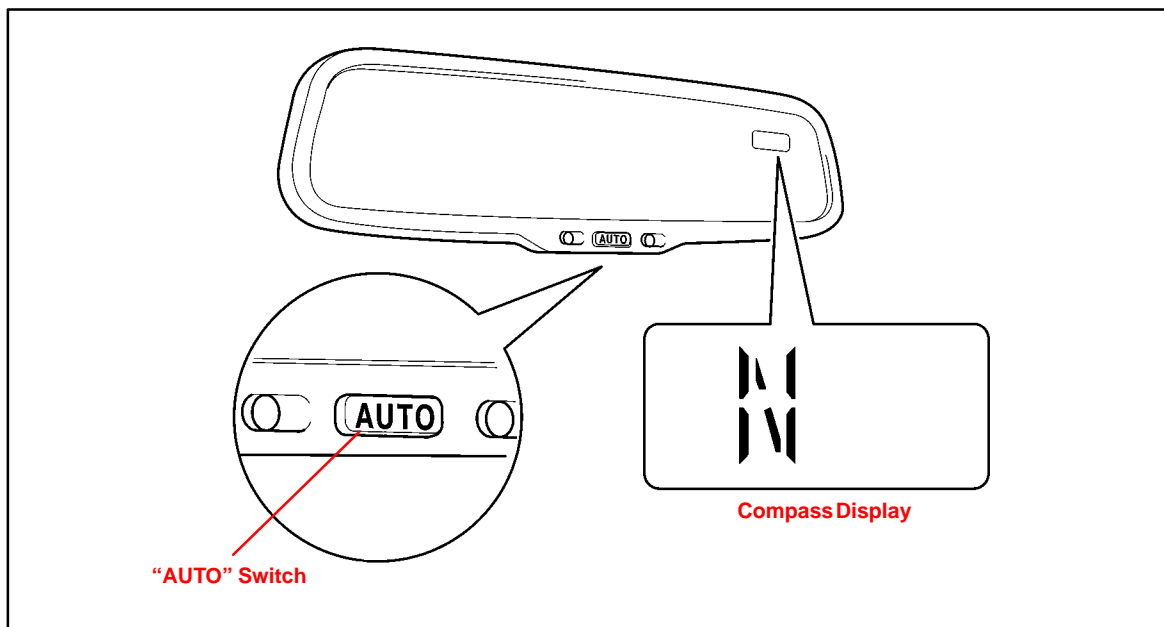
'07 LS 460

PRE-DELIVERY SERVICE
PD067-06

Introduction The compass indicates the direction that the vehicle is heading by detecting the direction and strength of the Earth's magnetic field and processing this data using the compass sensor and microcomputer.

Detection of the direction and strength of the Earth's magnetic field varies according to the area in which the vehicle is used and is affected by the residual magnetism of the vehicle. For this reason, the geographic direction displayed may also deviate from the direction determined by the Earth's magnetic field according to the area in which the vehicle is used.

Perform the initial calibration of the compass at the dealership prior to vehicle delivery.



- Applicable Vehicles**
- 2007 model year **LS 460** vehicles.

Warranty Information

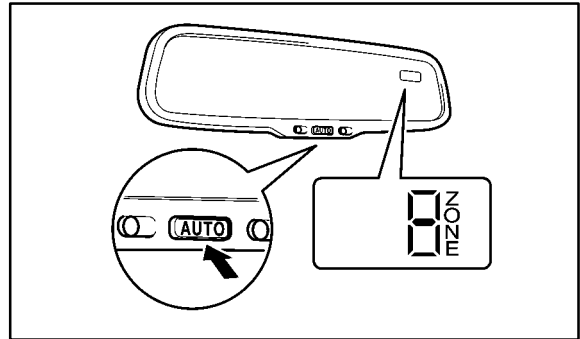
OP CODE	DESCRIPTION	TIME	OFF	T1	T2
N/A	Not Applicable to Warranty	-	-	-	-



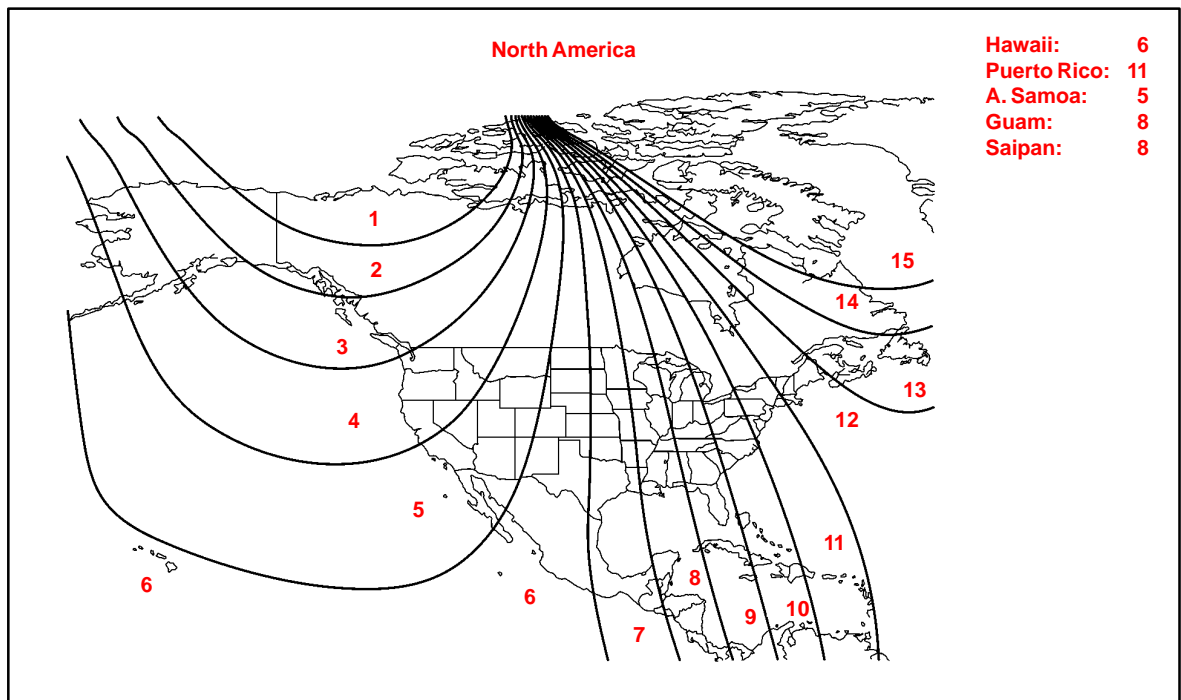
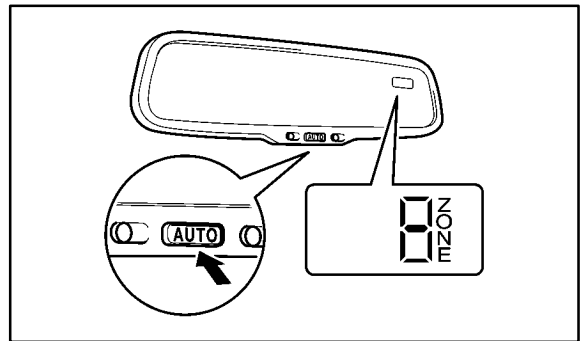
Compass Calibration Procedure

1. With foot OFF of the brake pedal, press the engine START/STOP button twice to switch to "IG-ON" mode.
2. Push and hold the "AUTO" switch on the mirror for 6 seconds until the zone number appears on the compass display.

NOTE:
 Pushing the "AUTO" switch for 3 seconds turns the compass display ON or OFF.

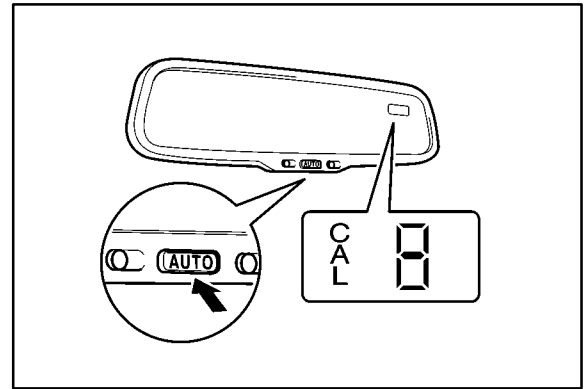


3. Once the zone appears, push the "AUTO" switch to select the number of the zone where the vehicle is located. See the map below for zone reference.



**Compass
Calibration
Procedure**
(Continued)

4. Depress the brake pedal and press the engine START/STOP switch once to start the engine.
5. Push and hold the “AUTO” switch on the mirror for about 9 seconds until “CAL” appears on the display.



6. Drive the vehicle slowly at 5 mph (8 km/h), or less, in a circle until the direction is displayed. If there is NOT enough space to drive in a circle, turn the car around as shown, doing two three-point turns in succession.

After driving in 1 to 3 circles in the above method, “CAL” disappears and calibration is complete.

NOTE:

- Do NOT perform calibration of the compass in a place where the Earth’s magnetic field is subject to interference by artificial magnetic fields (underground parking, under a steel tower, between buildings, roof parking, near a railroad crossing, near a large vehicle, etc.)
- During calibration, do NOT operate electric systems (moon roof, power windows, etc.) as they may interfere with the calibration.

