



**Technical Service
Information Bulletin**

September 22, 2006

Title:

**TIRE PRESSURE WARNING
VALVE/SENSOR ACTIVATION**

Models:

'07 LS 460

PD072-06



PRE-DELIVERY SERVICE

Introduction 2007 model year LS 460 vehicles are equipped with a direct-type Tire Pressure Warning System (TPWS). Each tire (including the spare tire) has a tire pressure warning valve/sensor, and the measured tire pressure data is transmitted to the Tire Pressure Warning System antenna/receiver to the Tire Pressure Warning System ECU.

During Pre-Delivery Service (PDS), the tire pressure warning valves/sensors must be activated according to the procedure in this bulletin.

- Applicable Vehicles**
- 2007 model year **LS 460** vehicles.

Required SSTs

ITEM NO.	SPECIAL SERVICE TOOLS (SSTs)	PART NUMBER	QTY	DRW**
1	Lexus Diagnostic Tester Kit* NOTE: <ul style="list-style-type: none"> • All components from this kit/set are required. • 12 Megabyte Diagnostic Tester Program Card (P/N 01002593-005) with version 13.4a Software (or later) is required. 	LEX220036	1	8
2	CAN Interface Module Kit* NOTE: <ul style="list-style-type: none"> • All components from this kit/set are required. 	01002744	1	8

* Essential SSTs.

** Refers to drawer number in SST Storage System.

NOTE:

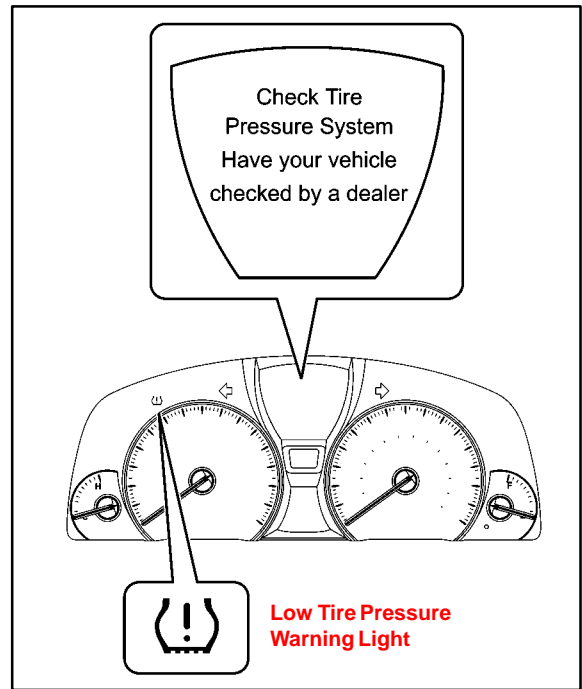
Additional Diagnostic Tester Kits, CAN Interface Modules, Program Cards, or other SSTs may be ordered by calling SPX/OTC at 1-800-933-8335.

Warranty Information

OP CODE	DESCRIPTION	TIME	OFF	T1	T2
N/A	Not Applicable to Warranty	-	-	-	-



- Reference**
- The Low Tire Pressure Warning Light will blink until all the tire pressure warning valves/sensors are activated.
 - The Diagnostic Trouble Codes (DTCs) listed below may be stored in the TPWS ECU until the tire pressure warning valves/sensors are activated.
 - The multi-information display will read “Check Tire Pressure System”.
 - The “Check Tire Pressure System” on the multi-information display will disappear when the tire pressure warning valve/sensors are activated.
 - The DTCs will automatically clear when the tire pressure warning valves/sensors are activated.



DTC *1	DTC *2	DTC
11	C2111	Transmitter ID1 Inactive (Sleep Mode)
12	C2112	Transmitter ID2 Inactive (Sleep Mode)
13	C2113	Transmitter ID3 Inactive (Sleep Mode)
14	C2114	Transmitter ID4 Inactive (Sleep Mode)
15	C2115	Transmitter ID5 Inactive (Sleep Mode)

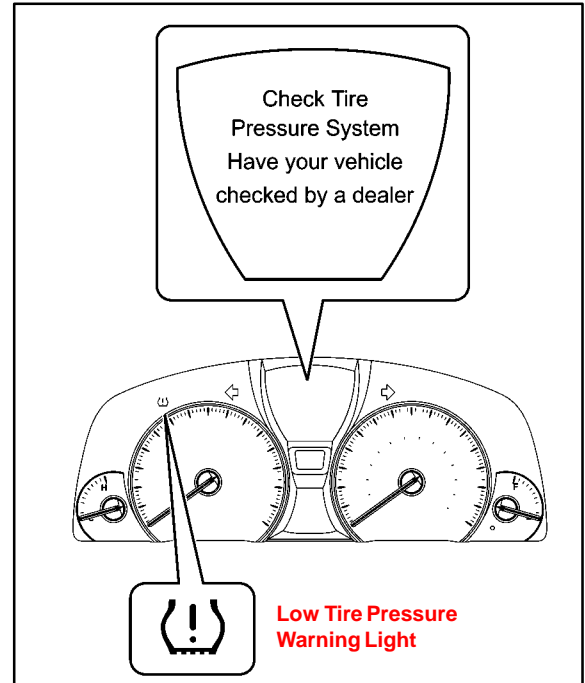
DTC *1: Indicated by flashing of the Low Tire Pressure Warning Light.

DTC *2: Indicated on the Lexus Diagnostic Tester.

Activation Procedure

1. Connect the Diagnostic Tester.
2. Push the START/STOP button until the vehicle is in the "IG-ON" mode and check that the Low Tire Pressure Warning Light blinks.

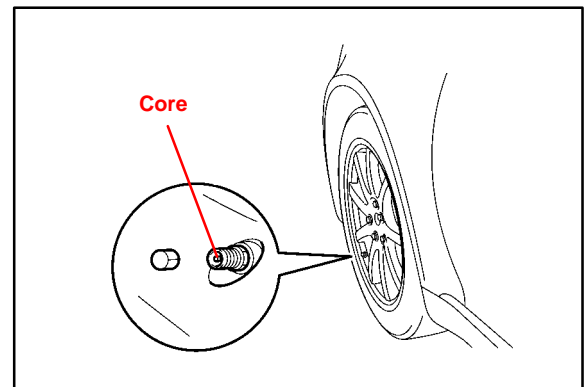
The light will remain ON after blinking for 1 minute. "Check Tire Pressure System" is displayed on the multi-information display until all tire pressure warning valve/sensors are activated.



3. Press or remove the valve core to reduce the tire inflation pressure rapidly by 6 psi (0.4 kgf/cm², 40 kPa), or more, within 30 seconds.
If the tire inflation pressure is NOT reduced by 6 psi (0.4 kgf/cm², 40 kPa), or more, within 30 seconds, the tire pressure warning valves/sensors will NOT be activated.

NOTE:

This operation is required for the system to be activated and **MUST** be performed for each tire (including the spare tire), one at a time.



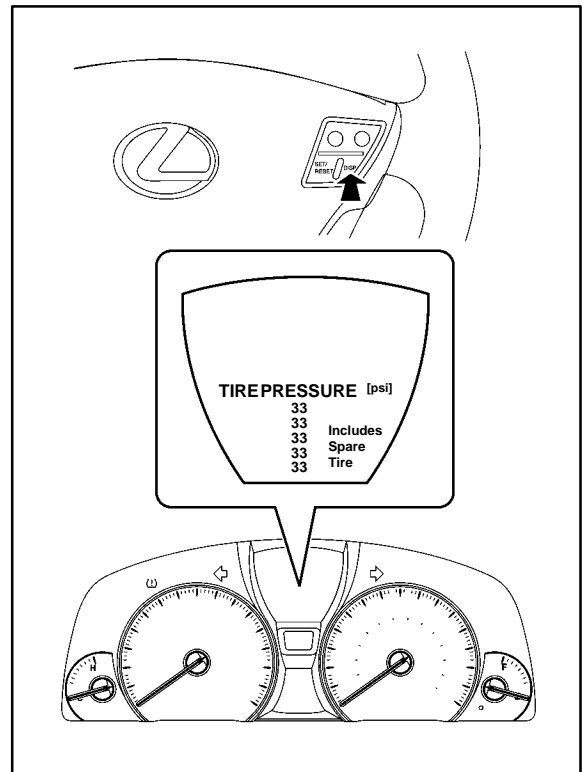
4. Using the Diagnostic Tester, check for TPWS DTCs.
 - If NO DTCs are stored, go to step 5.
 - If DTCs C2111 – C2115 are stored, repeat step 3.
 - If any other DTCs are stored, refer to the Repair Manual.

Activation Procedure
(Continued)

5. Press the “DISP” switch on the steering wheel and check that the tire pressures of all 5 tires is displayed on the multi-information display.

NOTE:

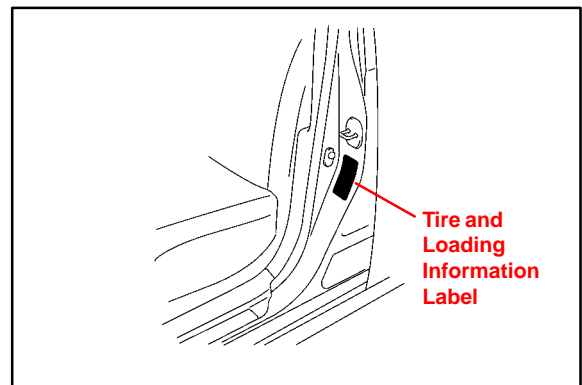
- The tire pressure display is **NOT** shown until all tire pressure warning valve/sensors are activated.
- If “Check Tire Pressure System” or “CHECKING” (which means the tire pressures are being measured) is displayed, repeat step 3. If step 3 is performed and the tire pressures are still **NOT** displayed, turn the tires 90 to 270 degrees.
- If the above steps are performed and the multi-information display does **NOT** show the tire pressures, refer to the Repair Manual.



6. Adjust all tires (including the spare tire) to the standard tire inflation pressure, as indicated on the Tire and Loading Information Label located inside the driver's door jam and confirm that the Low Tire Pressure Warning Light is OFF.

NOTE:

- If there is great difference between the current temperature of the tire and wheel (for example: shop temperature) and expected temperature (for example: outdoor temperature), this needs to be considered when adjusting the tire pressure.
- Adjust the tire pressure when the tires are cold.

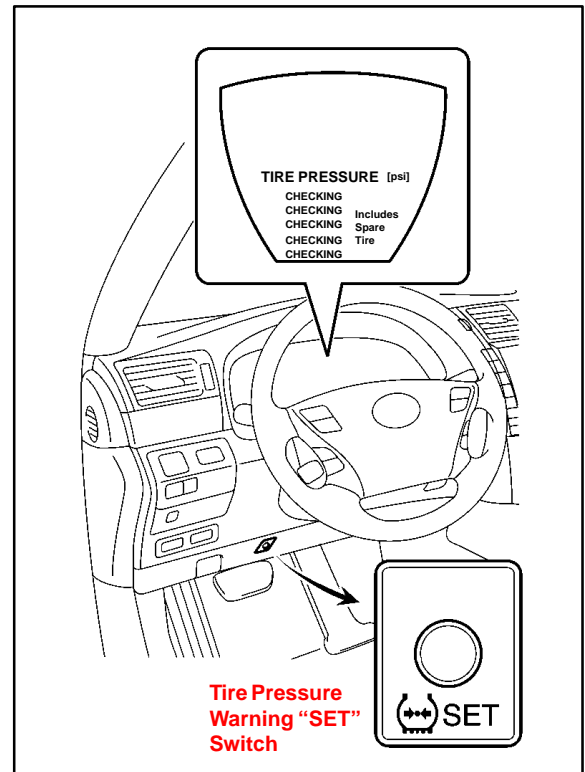


Activation Procedure
(Continued)

7. Push the START/STOP button until the vehicle is in the “IG-ON” mode, and then push and hold the Tire Pressure Warning “SET” switch for 3 seconds until the Low Tire Pressure Warning Light blinks 3 times and then turns OFF to set the tire pressure initialization.

NOTE:

- Make sure that the “Tire Pressure Reset Proceeding” appears on the multi-information display. After a few seconds, the display changes to “CHECKING” (which means the tire pressures are being measured).
- It is necessary for the ignition to be in the “IG-ON” mode a maximum of 5 minutes for initialization to complete correctly.



8. Check that the tire pressures for all 5 tires is displayed on the multi-information display.
- If the tire pressure values are NOT displayed on the multi-information display, the initialization is NOT complete.

NOTE:

- Check that the tire pressure adjusted in step 6 is displayed.
- Initialization will be completed if signals are received from all 5 tires. It takes 2 to 3 minutes to display the tire pressure data.

