


Initial Calibration of Compass During PDS

Service Category General

Section Pre-Delivery Service

Market USA

Lexus Supports ASE Certification 

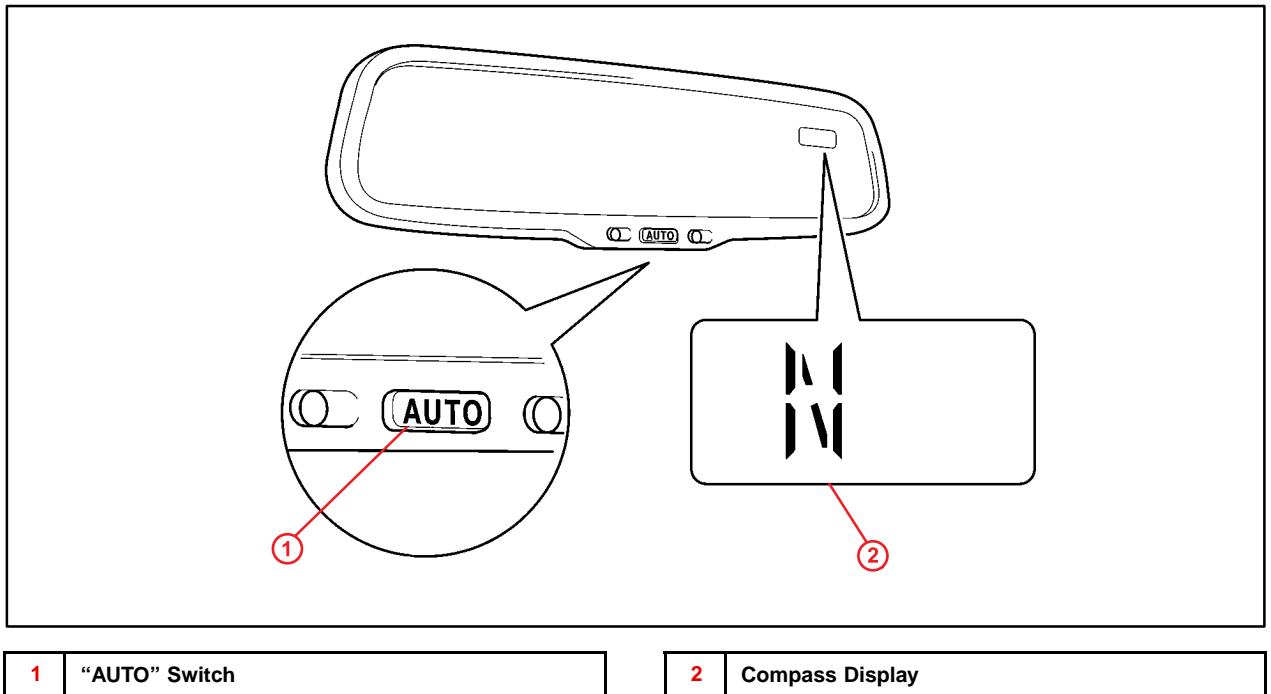
Applicability

YEAR(S)	MODEL(S)	ADDITIONAL INFORMATION
2009	LS460	

Introduction

Some 2009 model year LS 460 vehicles are equipped with a compass in the rear view mirror. Use the following procedure to complete initial calibration of the compass during Pre-Delivery Service (PDS).

Figure 1.



Warranty Information

OP CODE	DESCRIPTION	TIME	OFF	T1	T2
N/A	Not Applicable to Warranty	-	-	-	-

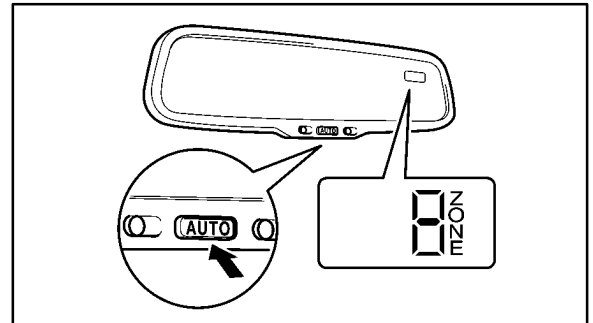
Initial Calibration of Compass During PDS

Compass Calibration Procedure

1. With foot OFF of the brake pedal, press the ENGINE START/STOP button twice to switch to "IG-ON" mode.
2. Push and hold the "AUTO" switch on the mirror for at least 6 seconds until the zone number appears on the compass display. **Figure 2.**

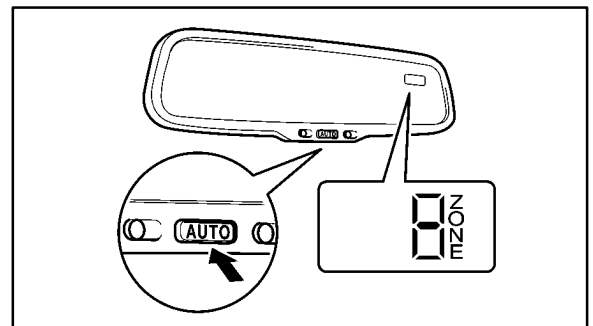
NOTE

Pushing the "AUTO" switch for 3 seconds turns the compass display ON or OFF.



3. Once the zone appears, push the "AUTO" switch to select the number of the zone where the vehicle is located. See the map in figure 4 for zone reference.

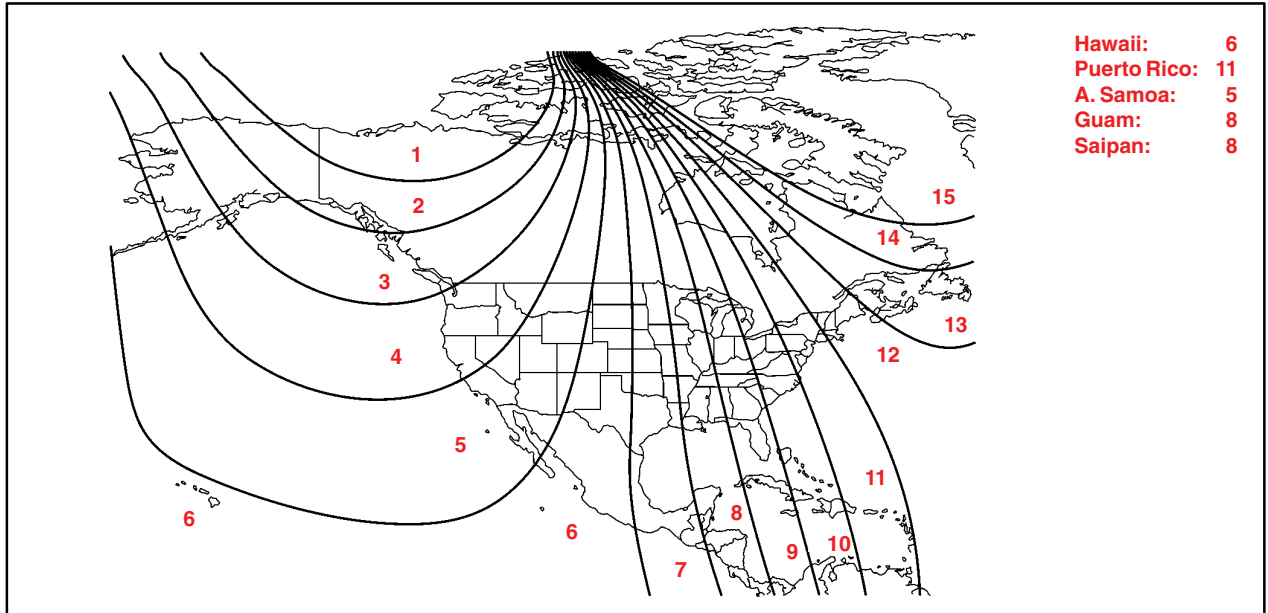
Figure 3.



Initial Calibration of Compass During PDS

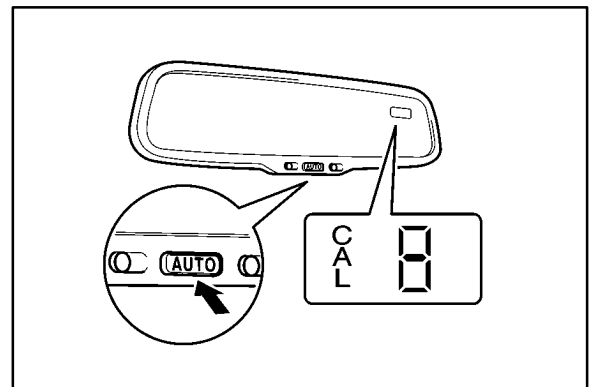
Compass Calibration Procedure (Continued)

Figure 4. North America



4. Depress the brake pedal and press the ENGINE START/STOP switch once to start the engine.

Figure 5.



5. Push and hold the "AUTO" switch on the mirror for at least 9 seconds until "CAL" appears on the display.

Initial Calibration of Compass During PDS

Compass Calibration Procedure (Continued)

6. Drive the vehicle slowly at 5 mph (8 km/h), or less, in a circle until the direction is displayed. If there is NOT enough space to drive in a circle, turn the vehicle around as shown, doing two three-point turns in succession.

Once the direction is displayed, the calibration is complete.

NOTE

- Do NOT perform calibration of the compass in a place where the Earth's magnetic field is subject to interference (underground parking, under a steel tower, between buildings, roof parking, near a railroad crossing, near a large vehicle, etc.)
- During calibration, do NOT operate electric systems (moon roof, power windows, etc.) as they may interfere with the calibration.

Figure 6.

